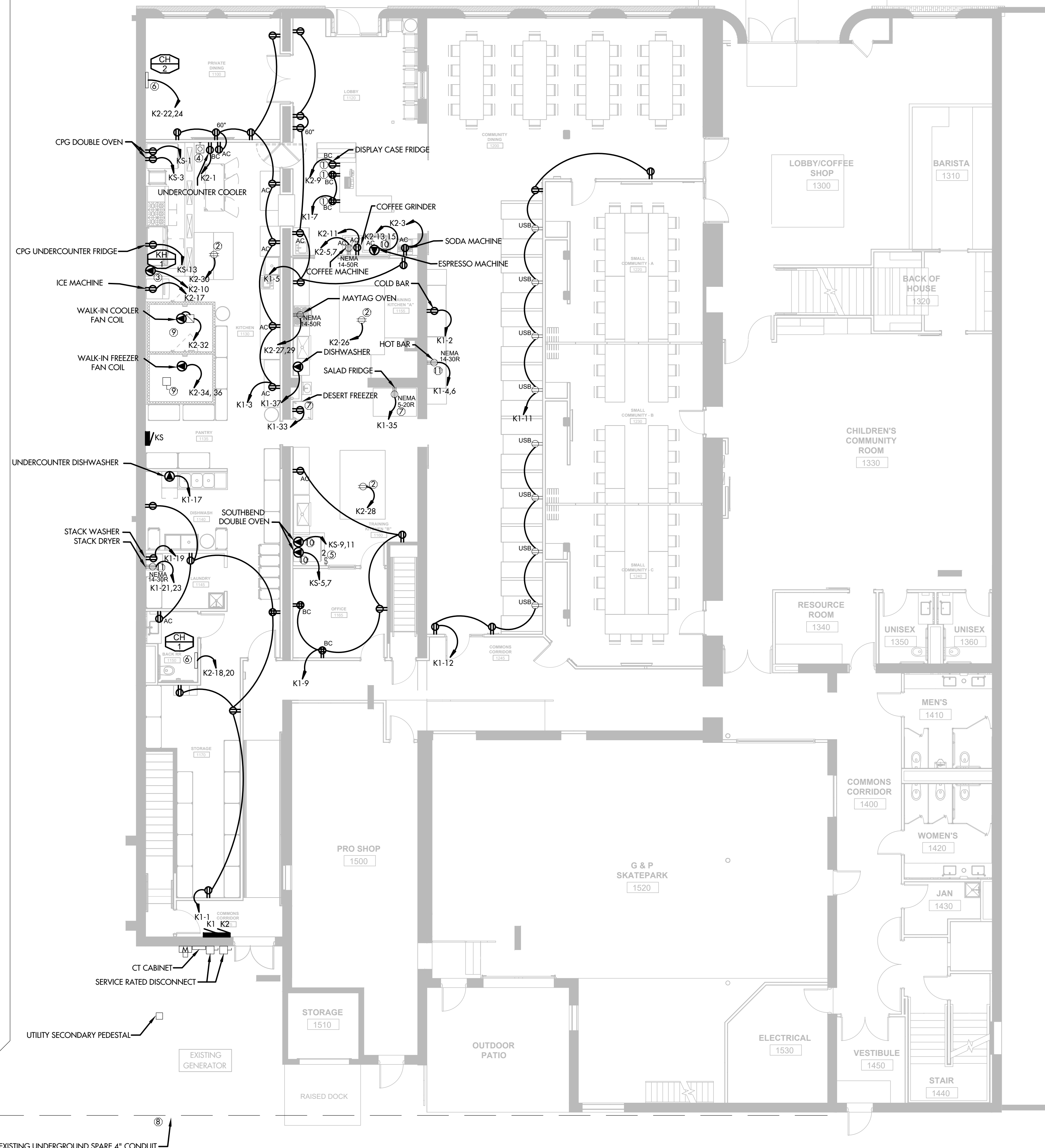


① ELECTRICAL CONTRACTOR TO INSTALL RECEPTACLES AT POINT OF SALE DESK WITHIN CASEWORK. COORDINATE WITH GENERAL CONTRACTOR FOR EXACT MOUNTING. ELECTRICAL CONTRACTOR TO ROUT CONDUIT THROUGH FLOOR AND RUN ACROSS THE EXPOSED DECK/CEILING IN THE BASEMENT.

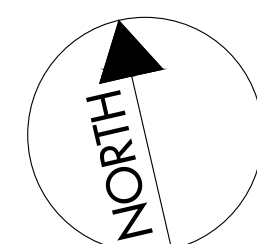
- ② REFER TO DROP CORD DETAIL. PROVIDE PENDANT MOUNTED RECEPTACLE ABOVE COUNTER.
- ③ REFER TO HOOD AND EXHAUST WIRING DIAGRAM. ELECTRICAL CONTRACTOR TO INTERCONNECT HOOD CONTROL PANEL WITH FIRE SUPPRESSION SYSTEM, FIRE ALARM, AND EQUIPMENT UNDER THE HOOD SO THAT ELECTRICAL AND GAS EQUIPMENT ARE SHUTDOWN UPON ACTIVATION OF FIRE ALARM. SEE PLUMBING DRAWINGS.
- ④ PROVIDE ROUGH-IN FOR REMOTE MANUAL PUSHBUTTON. REFER TO HOOD AND EXHAUST WIRING DIAGRAM.
- ⑤ PROVIDE 2-POLE, SINGLE THROW, 240V RATED SWITCH FOR CONTROL OF EF-2.
- ⑥ COVE HEATER PROVIDED BY MECHANICAL CONTRACTOR. THERMOSTAT INTEGRAL TO UNIT.

⑦ DUE TO EXISTING SITE CONDITIONS, ENGINEER WAS UNABLE TO CONFIRM EXACT NEMA CORD-AND-PLUG CONFIGURATION FOR EXISTING EQUIPMENT. A BEST GUESS HAS BEEN MADE BASED OFF OF NAMEPLATE AND CUT SHEET. CONTRACTOR TO FIELD VERIFY AND INCLUDE VARIATION IN THEIR WORK AT NO ADDITIONAL COST.

- ⑧ REFER TO POWER ONE-LINE DIAGRAM. EXISTING UNDERGROUND 4" SPARE CONDUIT RUNS FROM EXISTING UTILITY TRANSFORMER TO EXISTING RIMROCK SERVICE. LOCATION SHOWN OF EXISTING UNDERGROUND CONDUIT IS APPROXIMATE AND SHOULD BE FIELD VERIFIED BY ELECTRICAL CONTRACTOR. CONTRACTOR TO INTERCEPT EXISTING UNDERGROUND 4" SPARE CONDUIT AND EXTEND TO NEW UTILITY SECONDARY PEDESTAL TO PROVIDE SERVICE FOR FORK REAL CAFE. CONDUCTORS FROM EXISTING TRANSFORMER TO SECONDARY PEDESTAL PROVIDED BY UTILITY; CONDUCTORS FROM SECONDARY PEDESTAL TO CT CABINET PROVIDED BY ELECTRICAL CONTRACTOR. SECONDARY PEDESTAL PROVIDED BY UTILITY. CONTRACTOR TO COORDINATE ALL DIGGING, INTERCEPTION OF EXISTING CONDUIT, AND FINAL LOCATION OF SECONDARY PEDESTAL WITH UTILITY. COORDINATE TRENCH INSPECTION WITH UTILITY FOR DEPTH OF ELECTRICAL CONDUIT BURIED UNDERGROUND TO AVOID EXISTING GAS LINES. POINT OF CONTACT FOR BLACK HILLS ENERGY IS JORDAN HARGENS, #605-770-4036.
- ⑨ SEAL ALL PENETRATIONS THROUGH CEILING, AND WALLS, BOTH OUTSIDE AND INSIDE WALK-IN FREEZER/COOLER WITH DOW CORNING #999A SILICONE GLAZING SEALANT OR PRIOR APPROVED EQUAL.
- 10) EXISTING EQUIPMENT IS CORD-AND-PLUG. CONTRACTOR TO REMOVE THE CORD AND PROVIDE HARDWIRED CONNECTION. PROVIDE EQUIPMENT CONNECTION WITH LIQUID-TIGHT FLEXIBLE METAL CONDUIT FROM JUNCTION BOX TO EQUIPMENT.
- 11) CONTRACTOR TO REMOVE EXISTING CORD FOR EQUIPMENT AND PROVIDE WITH NEW CORD AS SCHEDULED AND SHOWN ON DRAWINGS.



FIRST FLOOR POWER PLAN
SCALE: 1/8" = 1'-0"



A. COORDINATE INSTALLATION OF ALL WIRING DEVICES WITH ARCHITECTURAL CASEWORK AND OTHER WALL ACCESSORIES.

- B. THE MAJORITY OF THE EXISTING WALLS ON THIS PROJECT ARE BEING FURRED OUT TO ACCOMMODATE NEW CONDUIT, WIRING, AND ELECTRICAL DEVICES. WHERE EXISTING WALLS ARE NOT BEING FURRED OUT THE ELECTRICAL CONTRACTOR SHALL TRY TO MINIMIZE THE SURFACE RACEWAY BY FISHING CONDUCTORS THROUGH WALLS AND CEILINGS AS MUCH AS POSSIBLE. COORDINATE SURFACE RACEWAY TYPE, QUANTITY, AND LOCATION WITH THE GENERAL CONTRACTOR AND ARCHITECT PRIOR TO INSTALLATION.
- C. ALL KITCHEN EQUIPMENT SHALL BE INSTALLED PER MANUFACTURER'S INSTRUCTIONS.
- D. DUE TO MULTIPLE SOURCES FOR FOOD SERVICE EQUIPMENT, NEMA PLUG CONFIGURATIONS CAN VARY. THE ELECTRICAL CONTRACTOR IS TO COORDINATE CORD AND PLUG CONFIGURATIONS WITH THE OWNER AND PROVIDE PER NEC. INCLUDE THESE VARIATIONS IN THEIR WORK AT NO ADDITIONAL COST.
- E. KITCHEN HOOD LIGHTS AND ASSOCIATED EXHAUST FAN TO BE WIRED TO THE HOOD CONTROL PANEL. PROVIDE ALL CONDUIT AND CONDUCTORS FOR A COMPLETE WORKING SYSTEM.
- F. VERIFY EXACT LOAD AND SPECIFIC ROUGH-IN REQUIREMENTS AND LOCATIONS OF ALL KITCHEN EQUIPMENT RECEPTACLES WITH OWNER PRIOR TO BEGINNING WORK.
- G. ALL CONNECTIONS FOR FOOD SERVICE EQUIPMENT SHALL BE PROVIDED WITH LIQUID-TIGHT FLEXIBLE METAL CONDUIT.